

function

Impact tests and RCP (Rapid Crack Propagation) tests often require test specimens to be conditioned at 0 degree C or below. This conditioning chamber is capable of cooling samples up to very large dimensions, with a temperature range from room temperature down to -25 degrees C. Lower temperature on request.

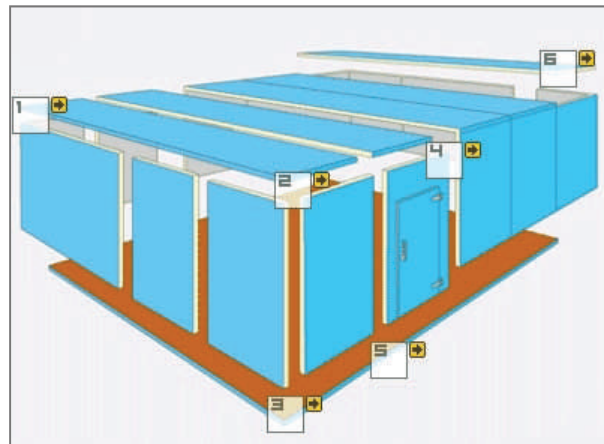
highlights

- cooling of even large sized samples
- customer tailored solutions
- easy to assemble
- high flexibility

features

The conditioning chamber is standard equipped with a cooling compressor on the roof of the chamber (other placement on request). The testing equipment can by choosing the right dimension of conditioning chamber be placed inside the chamber.

The chamber is a modular system which can be supplied in various sizes. It takes only about 2-4 hours for two men to set it up, depending on size.



We wish to give our partners the tools to produce to the highest standard, while helping them to produce as cost-effectively as possible with Q.C. tools throughout the factory.

construction

The **SCITEQ** conditioning chamber is built up of 15 mm extra strengthened floor (floor point loading up to 150kg/wheel). The panels are made of 0,6 mm galvanised polyester treated plates internal and external. The doors are equipped with heat in the frame and door step. There is a pressure release valve in the door element for easy opening.

The chambers are constructed from individual dividing panels and through corner panels. This gives very great sizing flexibility. It also means that this solution can be installed in practically any area and can always easily be relocated or extended.

associated | equipment ▲ | essential equipment

impact
tester

rapid crack
propagation

temperature room temperature down to -20 degrees C as standard
other temperature range on request

minimum size internal dimensions
1200 x 1200 x 1800mm (LxWxH)
each module is 300 x 300 x 300 mm

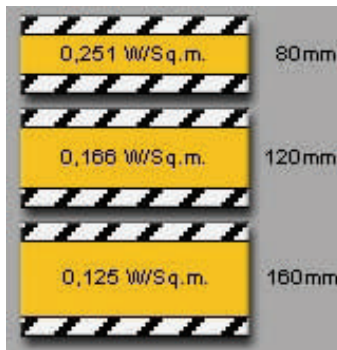
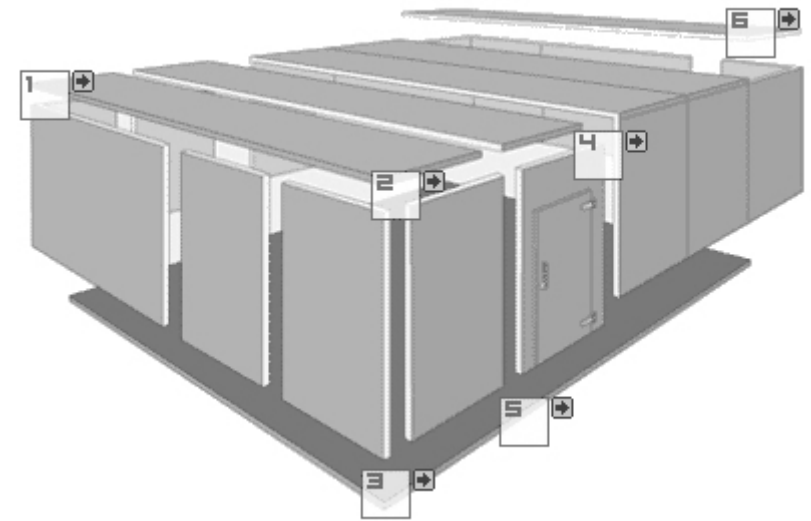
maximum size no limitations
(size must be dividable with 30)

insulation three options
80mm, 120mm or 160mm

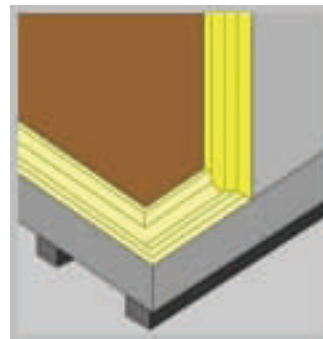
door size dependent on chamber size. Standard sizes
650x1700mm, 700x1800mm and 900x2000mm.

cooling unit standard roof mounting. Other placement on request

power requirement to be calculated.
standard voltage single phase 230V/50Hz (0 degree C)
or three phase 400V/50Hz (-20 degree C).
Others on request.



three insulation thicknesses available



associated equipment ▲ | essential equipment

impact tester

rapid crack propagation

SCITEQ A/S
Rho 3
DK-8382 Hinnerup
Denmark
Tel: +45 86 96 19 33
Fax: +45 86 96 24 75
www.sciteq.com
sales(at)sciteq.com