

## function

SCITEQ heating ovens are produced in order to carry out heat reversion tests, dimension stability tests, accelerated ageing or pressure tests at high temperatures. The ovens can also be used for conditioning any other type of sample requiring a high level of temperature control.

### highlights

high temperature accuracy

fast temperature recovery

stainless steel inner casing

high quality components

24 hour on/off timer

universal oven

## features

SCITEQ ovens are state-of-art with fast and accurate temperature control and temperature recovery. Three models from 180lt to 689lt inner casing volume are available. Standard is:

- Microprocessor temperature controller. Temperature range: T<sub>ambient</sub>+10° C to 300° C
- Regulation of fresh and exhaust air
- Adjustable temperature upper limit cut out
- 24-hour timer for switching oven on and off
- Speed setting of the air-circulation fan
- Two stainless steel shelves

Optional equipment:

- Access ports for pressure testing
- Quick connectors inside oven for pressure testing
- Water collection tray with drain in bottom of oven for pressure testing
- Additional stainless steel shelf's
- Temperature output for logging of test temperature on PC SCITEQ software
- PC SCITEQ software
- Calibration certificate according to ISO 12880
- Oven door windows

We wish to give our partners the tools to produce to the highest standard, while helping them to produce as cost-effectively as possible with Q.C. tools throughout the factory.

## construction

SCITEQ ovens are made of high quality materials, can reach temperatures up to 300° C and are distinguished by extremely short heating and recovery times. Inner casing is made of corrosion-protected stainless steel and the shelves are tilt-proof. The smallest oven can be placed on a table, the bigger ones are supplied with turning wheels. All controls are easily adjusted on the front panel.

Optionally the front of the oven has two or more windows so that an ongoing test can be watched from the outside. They can also be supplied with 1/4" female access ports and quick connections inside for mounting of the sample when used for pressure testing of pipes at higher temperatures than 95° C.



### associated equipment ▲ essential equipment

pressure stations

burst stations

end closures

pressure hoses

pc-sciteq software

end closure mounting

laboratory saw

parallel scratchier

**model range** 180lt, 375lt and 689lt (inner casing volume)

**temperature range:** T<sub>ambient</sub>+10° C to 300° C

**temperature accuracy:** +/- 0,5° C from set temperature.

**heating up times** 180lt oven: 23min. to 150° C  
 375lt oven: 30min. to 150° C  
 689lt oven: 30min. to 150° C

**max. flow of circulating air** 180lt oven: 5.2m<sup>3</sup>/h  
 375lt oven: 5.9m<sup>3</sup>/h  
 689lt oven: 6.2m<sup>3</sup>/h

**inner casing material:** stainless steel

**electrical supply:** 180lt oven: Single phase 220V+PE  
 375lt and 689lt oven: 3 x 380V + 0 + PE

**power consumption:** 180lt oven: 2.8kW  
 375lt oven: 4.2kW  
 689lt oven: 6.3kW

**weight** 180lt oven: 100kg  
 375lt oven: 163kg  
 689lt oven: 241kg

**access ports allowing pressure test (optional)** 180lt oven: 24 at top of oven with 1/4" female thread both ends  
 375lt and 689lt oven: 12 at right hand side of oven with 1/4" female thread both ends

**quick connectors (optional)** 180lt oven: 24 distributed at top of inner casing of oven. Allows end closures to be connected easily  
 375lt and 689lt oven: 12 distributed at top of inner casing of oven. Allows end closures to be connected easily

**temperature logging (optional)** serial interface output to log temperature on PC SCITEQ software

**PC SCITEQ software (optional)** log and display oven temperature on PC

**window in door (optional)** 180lt oven: 2 (each 260x200mm)  
 375lt oven: 3 (each 260x200mm)  
 689lt oven: 6 (each 260x200mm)

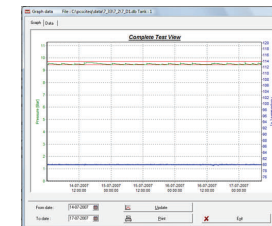
**dimensions** 180lt. (with access ports) internal: 554x503x644mm  
 (width x depth x height) external: 895x715x816(830)mm

**dimensions** 375lt. (with access ports) internal: 544x522x1319mm  
 (width x depth x height) external: 744(760)x715x1707mm

**dimensions** 689lt. (with access ports) internal: 1000x522x1319mm  
 (width x depth x height) external: 1200(1215)x715x1707mm



View inside heating oven - pipe sample for heat reversion test inside.



View of temperature graph in PC SCITEQ software

**SCITEQ A/S**  
 Rho 3  
 DK-8382 Hinnerup  
 Denmark  
 Tel: +45 86 96 19 33  
 Fax: +45 86 96 24 75  
 www.sciteq.com  
 sales(at)sciteq.com

associated | equipment | essential equipment

pressure stations	burst stations	end closures	pressure hoses	pc-sciteq software	end closure mounting	laboratory saw	parallel scratcher
-------------------	----------------	--------------	----------------	--------------------	----------------------	----------------	--------------------